

Greywater Irrigation Controller

clonk

Efficient and Reliable Water Management Solution

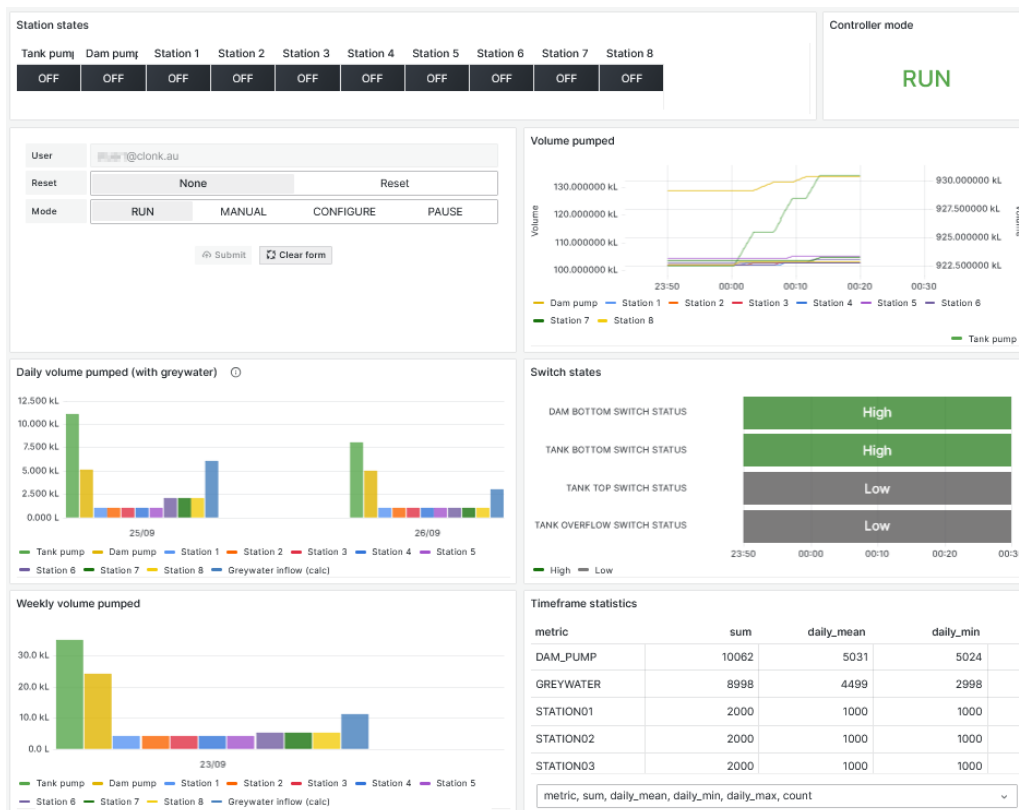
Our **Greywater Irrigation Controller** is a simple-to-use system designed to manage the water level in a greywater holding tank. The water is distributed sequentially to 13 stations in such a way that no station ever misses out. In conjunction with our cloud-based web portal, the system provides real-time data and complete remote control.

Key Features

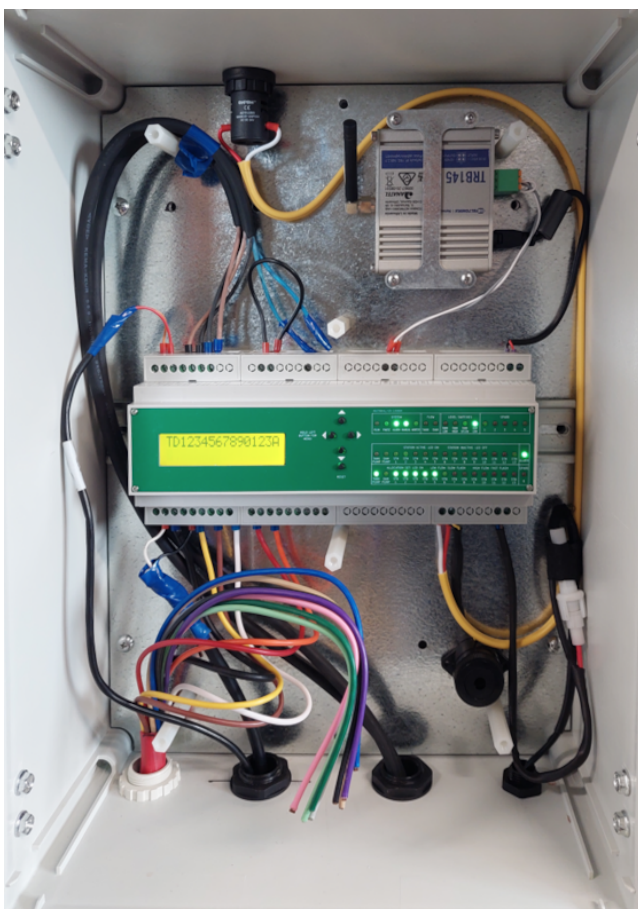
- **Two modes:** The controller can be configured in two modes:
 - **Targetted irrigation** volumes for each station with tank top ups from external supply if necessary.
 - **Evenly distributed** irrigation volumes between stations dependent on available supply.
- **Remote Control:** Manage your irrigation system from the web with our mobile-friendly dashboard.
- **Modbus RTU:** Acts as a Modbus slave. Fully documented for integration into a SCADA system.
- **Easy Installation:** DIN form factor for installation into existing cabinets. Also available in an IP68 polycarbonate case with hinged door.
- **Flow rate monitoring:**
 - Prevents pump damage by detecting no-flow conditions.
 - Prevents water wastage by skipping stations with burst pipes (high flow rate).
- **Email alarms:** Customisable email alerts to keep you informed as problems arise.
- **Weather resistant:** Optionally available in a weather resistant housing.
- **Secure:** Data is transmitted over a secure link using mutual TLS certificate based encryption. Customer retains full ownership of data which will be deleted from server on request.



Water meter specifications	
Tank top-up metering Irrigation metering Greywater inflow metering Compatible with Maximum pulse rate Minimum pulse duration (on, off) Volume resolution	Yes (volume and flow rate) Yes (volume and flow rate) No (volume derived on web portal) Dry reed switch pulse meters Arad Octave dual pulse attachment Arad Octave pulse + analogue attachment iTron Cyble attachment Elster/Honeywell PR7 attachment 20Hz 20ms, 20ms 1L (meter dependent)
Level switches	
Tank top-up source low level Greywater holding tank low level Greywater holding tank high level Greywater holding tank overflow Compatible with Signal Normally open/closed logic	Yes (eg: dam low level cutout) Yes - prevents running pump dry Yes Yes - prevents tank top-up and starts irrigation Dry contact reed switch 5v, 1mA, 20ms hysteresis User configurable
Pump control	
Method Output Tank top-up pump control Irrigation pump control Irrigation startup sequence Irrigation shutdown sequence Pump run-dry protection Holding tank top-up logic	Connect to external motor starter On:24vAC, Off:0v (maximum 1A) Yes (time, volume or target mode) Yes Station→Master Valve→Pump Pump→Master Valve→Station Yes, if water meter fitted To conserve water, dam top-up pauses during irrigation ensuring tank capacity is kept available for grey water inflow. In targeting mode, the holding tank is fully drained before any water new water is added.
Irrigation stations	
Number of stations Master valve Output	13 User configurable, but consumes a station On:24vAC, Off:0v (maximum 1A)
Manual control	
Via keypad interface Via remote interface Number of simultaneous stations	Yes Yes Up to 5, including pumps
Alarms	
Hardware alarm Email alerts	Yes, 24vAC output (fitted to lamp and buzzer by default, but can be repurposed) Yes, configurable for various fault conditions
Power	
Input Power consumption Modem power consumption	24vAC, 2A 2W (not including modem or solenoids) 0.5W (standby), 3.5W (transmit)
Dimensions	
Controller only Controller in IP68 case	212 x 91 x 57mm 400 x 300 x 180mm (480mm for door clearance)



Dashboard provides access to historical, aggregated and real-time data



Ample space behind escutcheon for wiring.